

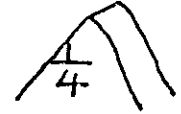
State of Wyoming Corner Record

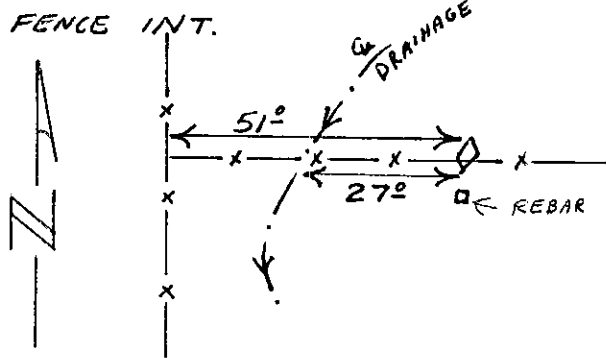
(IN COMPLIANCE WITH THE CORNER PERPETUATION AND FILING ACT, WYOMING STATUTES, 1977 SECTION 33-29-140, ET. SEQ., AND THE RULES AND REGULATIONS OF THE BOARD OF PROFESSIONAL ENGINEERS AND PROFESSIONAL LAND SURVEYORS)

REVERSE SIDE OF THIS FORM MAY BE USED IF MORE SPACE IS NEEDED.

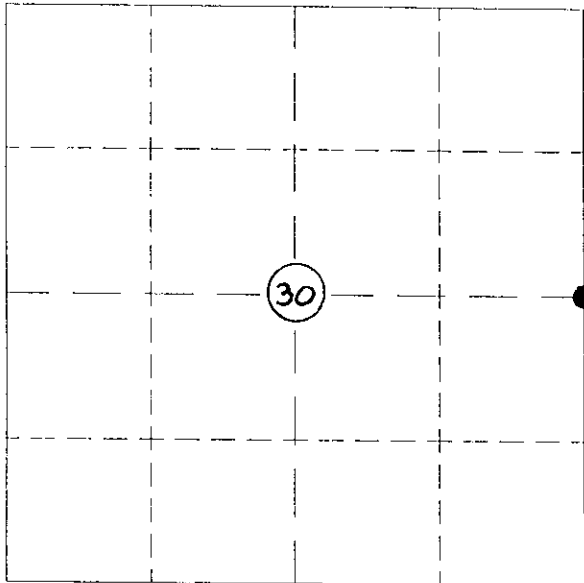
RECORD OF ORIGINAL SURVEY AND CITATION OF SOURCE OF HISTORICAL INFORMATION (IF CORNER IS LOST OR OBLITERATED). DESCRIPTION OF CORNER MONUMENTATION EVIDENCE FOUND AND/OR MONUMENT AND ACCESSORIES ESTABLISHED TO PERPETUATE THE LOCATION OF THIS CORNER. SKETCH OF RELATIVE MONUMENT, ACCESSORIES, AND REFERENCE POINTS WITH COURSE AND DISTANCE TO ADJACENT CORNER(S) (IF DETERMINED IN THIS SURVEY). METHOD AND RATIONALE FOR REESTABLISHMENT OF LOST OR OBLITERATED CORNER.

FOUND STONE 2 1/2" X 6" 5" ABOVE GROUND
 IN OLD PILE OF STONE IN EAST-WEST FENCE
 ALSO FOUND 3/4" DIA. REBAR 8" SOUTH OF STONE
 51° EAST OF FENCE INT.


 STONE IS CLEARLY
 MARKED ON WEST FACE



MONUMENT LOCATION



See sketch
on back



RECORDED 11/24/2004 AT 12:10 PM REC# 403332 K# 1850 PG# 150
 DEBRA K. LATHROP, CLERK OF LARAMIE COUNTY, WY PAGE 1 OF 2

DATE OF FIELD WORK: 11/11/04

OFFICE REFERENCE: 04209

CROSS INDEX PLAT

FIRM/AGENCY, ADDRESS

THIS CORNER RECORD WAS PREPARED BY ME OR UNDER MY DIRECTION AND SUPERVISION.

COFFEY & ASSOCIATES, L.L.C.
 903 GRAND AVENUE
 LARAMIE, WYOMING 82070
 TELEPHONE NUMBER: (307)742-7425

SEAL & SIGNATURE

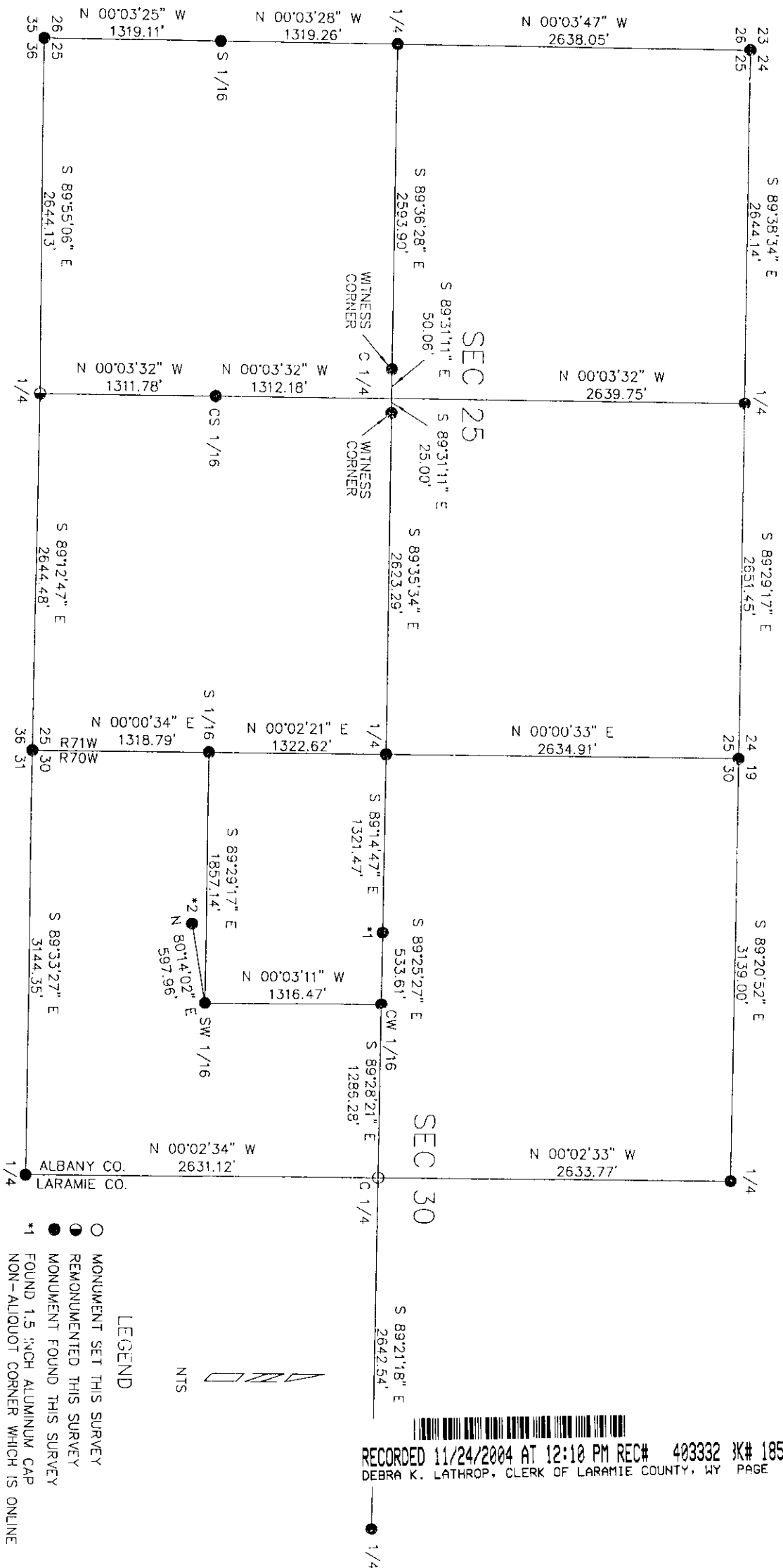
	1	2	3	4	5	6	7	8	9	10	11	12	13	14	15	16	17	18	19	20	21	22	23	24	25
A																									
B	+	+	+	+	+	+	+	+	+	+	+	+	+	+	+	+	+	+	+	+	+	+	+	+	+
C	+	6	+	+	5	+	+	+	4	+	+	+	3	+	+	+	2	+	+	1	+	+	+	+	+
D	+	+	+	+	+	+	+	+	+	+	+	+	+	+	+	+	+	+	+	+	+	+	+	+	+
E																									
F	+	+	+	+	+	+	+	+	+	+	+	+	+	+	+	+	+	+	+	+	+	+	+	+	+
G	+	7	+	+	8	+	+	+	9	+	+	+	10	+	+	+	11	+	+	12	+	+	+	+	+
H	+	+	+	+	+	+	+	+	+	+	+	+	+	+	+	+	+	+	+	+	+	+	+	+	+
J																									
K	+	+	+	+	+	+	+	+	+	+	+	+	+	+	+	+	+	+	+	+	+	+	+	+	+
L	+	18	+	+	17	+	+	+	16	+	+	+	15	+	+	+	14	+	+	13	+	+	+	+	+
M	+	+	+	+	+	+	+	+	+	+	+	+	+	+	+	+	+	+	+	+	+	+	+	+	+
N																									
O	+	+	+	+	+	+	+	+	+	+	+	+	+	+	+	+	+	+	+	+	+	+	+	+	+
P	+	19	+	+	20	+	+	+	21	+	+	+	22	+	+	+	23	+	+	24	+	+	+	+	+
Q	+	+	+	+	+	+	+	+	+	+	+	+	+	+	+	+	+	+	+	+	+	+	+	+	+
R																									
S	+	+	+	+	+	+	+	+	+	+	+	+	+	+	+	+	+	+	+	+	+	+	+	+	+
T	+	30	+	+	29	+	+	+	28	+	+	+	27	+	+	+	26	+	+	25	+	+	+	+	+
U	+	+	+	+	+	+	+	+	+	+	+	+	+	+	+	+	+	+	+	+	+	+	+	+	+
V																									
W	+	+	+	+	+	+	+	+	+	+	+	+	+	+	+	+	+	+	+	+	+	+	+	+	+
X	+	31	+	+	32	+	+	+	33	+	+	+	34	+	+	+	35	+	+	36	+	+	+	+	+
Y	+	+	+	+	+	+	+	+	+	+	+	+	+	+	+	+	+	+	+	+	+	+	+	+	+
Z																									
	1	2	3	4	5	6	7	8	9	10	11	12	13	14	15	16	17	18	19	20	21	22	23	24	25



CORNER NAME: E 1/4 Cor Sec 30, T 13N, R 70W, 6th PM

COUNTY: Laramie

CROSS-INDEX NUMBER: T-5



- MONUMENT SET THIS SURVEY
 ● REMONUMENTED THIS SURVEY
 ● MONUMENT FOUND THIS SURVEY
 *1 FOUND 1.5 INCH ALUMINUM CAP
 NON-ALIQUOT CORNER WHICH IS ONLINE
 *2 FOUND 1.5 INCH ALUMINUM CAP
 NON-ALIQUOT CORNER WHICH IS OFFLINE

LEGEND

